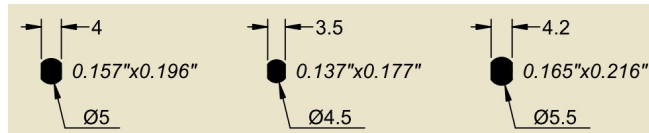
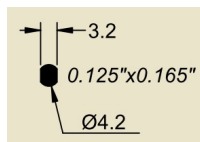


Plastic or metal spiral punching patterns		Machines														
Designations	Patterns	PunchBlind3300	Punch3400	Punch5000	DocuPunch	AlphaDoc	CoverPunch	EPX700	EX Serie	EM Serie	WIL420SP & MP	CF-SFIL380MP	DCR400	Onglematic	EMT 650	Other brands
		Plastic or metal spiral, oval holes - pitch 5:1" (5mm), 0,2475" (6.29mm), 6.30mm or 4:1" (6.35mm)		X	X	X	X	X		X	X	X		X		

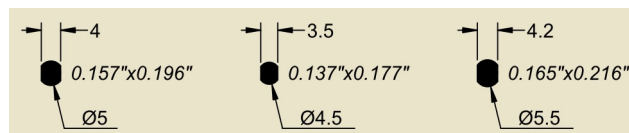
Main recommended oval hole dimensions for plastic or metal spiral & pitch 4:1" (6.35mm), 6.30mm, 0,2475"(6.29mm) & 6mm



Main recommended oval hole dimensions for plastic or metal spiral & pitch 5:1" (5mm)



Main recommended oval hole dimensions for plastic or metal spiral & pitch 2.5:1" (10,16mm) or 3:1"(8,47mm)



Compatibility of main 4x5mm oval hole punching patterns with sheet bound edge format

EUROPEAN FORMATS / FORMATS EUROPEENS						
Pitch	Pas	Hole edge to hole edge Distance entre 2 trous	Bound edge width Largeur feuille	Number of holes Nombre de trous	Punched width Largeur perforée	Hole edge to sheet edge
						Dist bord trous à bord feuille
(inch)	(mm)	(mm)	(mm)		(mm)	(mm)
4:1"	6,35	2,35	297,00	47	296,10	0,45 ☹️
			210,00	33	207,20	1,40 ☹️
			148,00	23	143,70	2,15 ☹️
.2475"	6,29	2,29	297,00	47	293,34	1,83 ☹️
			210,00	33	205,28	2,36 ☹️
			148,00	23	142,38	2,81 ☹️
	6,30	2,30	297,00	47	293,33	1,84 ☹️
			210,00	33	205,27	2,37 ☹️
			148,00	23	142,37	2,82 ☹️
3:1"	8,47	2,97	297,00	35	293,48	1,76 ☹️
			210,00	25	208,78	0,61 ☹️
			148,00	17	141,02	3,49 ☹️

US FORMATS / FORMATS US						
Pitch	Pas	Hole edge to hole edge Distance entre 2 trous	Bound edge width Largeur feuille	Number of holes Nombre de trous	Punched width Largeur perforée	Hole edge to sheet edge
						Dist bord trous à bord feuille
(inch)	(mm)	(mm)	(mm)		(mm)	(mm)
4:1	6,35	2,35	279,40	44	277,05	1,18 ☹️
			215,90	34	213,55	1,18 ☹️
			139,70	22	137,35	1,18 ☹️
.2475"	6,29	2,29	279,40	44	274,32	2,54 ☹️
			215,90	34	211,45	2,22 ☹️
			139,70	22	136,02	1,84 ☹️
3:1	8,47	2,97	279,40	33	276,54	1,43 ☹️
			215,90	25	208,78	3,56 ☹️
			139,70	16	132,55	3,57 ☹️