

Electric plastic coil inserter

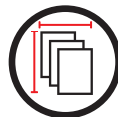


The **EB3300 Coil**® is a 330mm wide electric table top binder for plastic spiral. This machine is particularly well suited to small and medium production runs. It can be easily adapted to all spiral sizes from 6 to 22mm. The EB3300 Coil has a diameter selector for spirals and a book thickness scale, so it's easy to select and check the correct spiral size for the corresponding document thickness. The presence of a spiral pitch identifier also ensures that the spiral pitch matches that of the perforated document. The machine is activated by a foot pedal, allowing the operator to use both hands.

FEATURES & BENEFITS

- **Adjustable electric coil inserter:** Provides a constant, correct crimp angle for perfect crimping on all coil sizes between 6 and 50mm.
- **Heavy-duty design and engine:** Robust roller motor with thermal overload protection to avoid downtime.
- **“U” shaped alignment channel:** To form an outline on the spine of the document for quicker and easier insertion.

Sheet size



Max: **330mm (BE)**
BE = Binding edge

Book thickness



Min: 4mm
(approx. 40 sheets - 80 gsm)
Max: 19mm
(approx. 190 sheets - 80 gsm)

Capacity per hour



Up to 300 documents

Coil size



From 6 to 22mm

Power requirements



110/120 V (60 Hz) - 1ph
200/240 V (50 Hz) - 1 ph

Air required



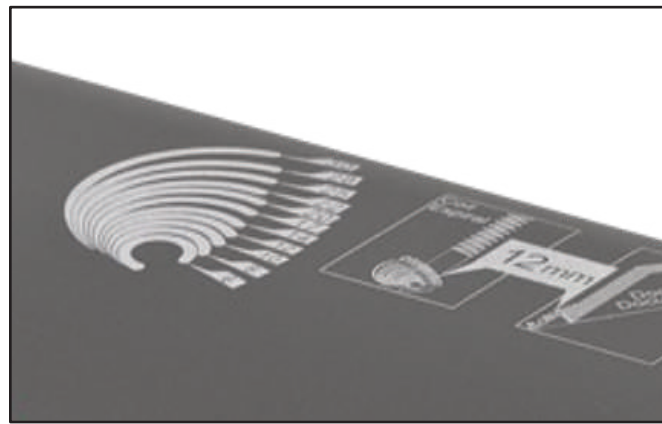
No



Heavy-duty roller motor and design with thermal overload protection to avoid downtime



A book thickness scale to select and check the correct spiral size for the corresponding document thickness



Presence of a spiral pitch identifier to ensure that the spiral pitch matches that of the perforated document

TECHNICAL CHARACTERISTICS

| | |
|----------------------------|--|
| Max document size | 330mm (BE) (BE = Binding edge) |
| Crimping capacity | From 4mm (app. 40 sheets - 80 gsm) up to 19mm (app. 190 sheets - 80 gsm) |
| Coil size | From 6mm to 22mm |
| Crimping productivity | Up to 300 documents per hour |
| Format set up time | No settings required |
| Power | 220/240V (50Hz) 1ph - 110/120V (60Hz) 1ph |
| Machine dimensions (LxWxH) | 240 x 350 x 115 mm |
| Net weight | 5.5 Kg |

* All above outputs are based on 80gsm plain paper and will vary pending on the nature of the document, the operator skills and the work organisation.